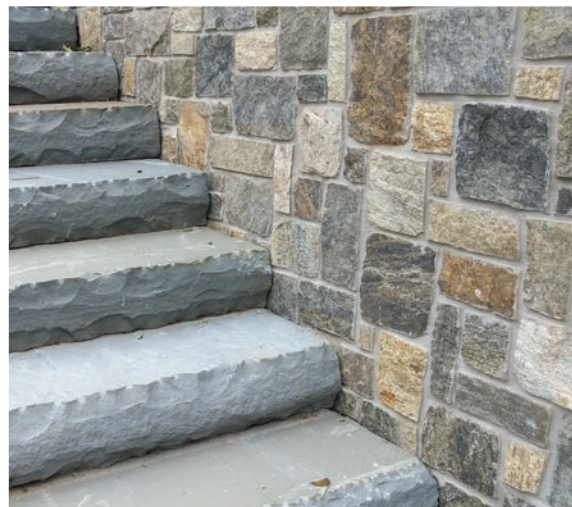
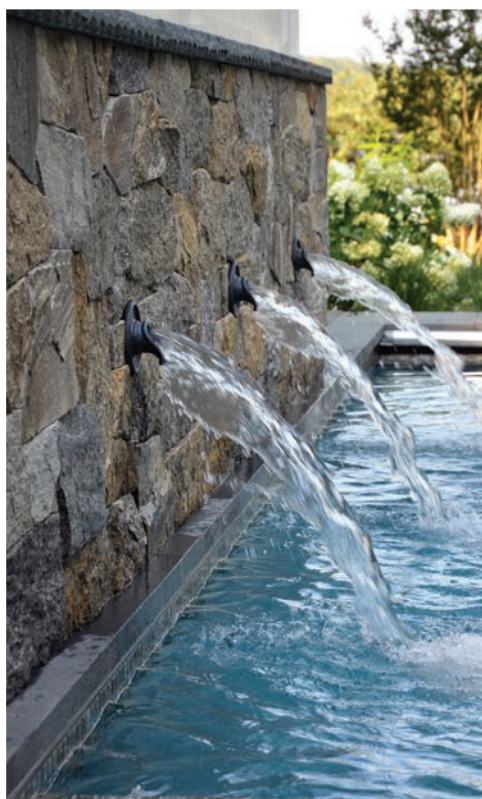


NATURAL FACING



Sawn Thin Stone Product Overview

Natural Facing has a large selection of sawn tech natural thin stone veneer. Our easily-installed, adhered stone veneer comes in many different shapes, including mosaic, roughly rectangular, and ledgerstone.

LEDGESTONE



Baja Brown



Clove Road



Crystal Creek



Heubert County



Kingston



Lake George



Ocean Blue



Pinehurst



Rodgers Forge



Terrapin

ROUGHLY RECTANGULAR



Broadwater



Camino Cliffs



Chesapeake



Crystal Creek



Jefferson Reserve



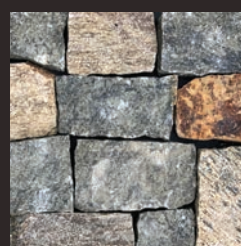
Logan Run



Pocomoke



Rock Creek



Sun Valley



Wilmington

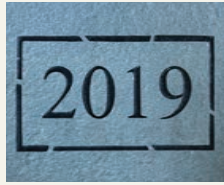
SPECIALTY PIECES AVAILABLE!



Corners



Light Box & Sills



Date Plates

Additional Stones available.
Selection subject to change.
For the most up-to-date product list, visit
NATURALFACING.COM

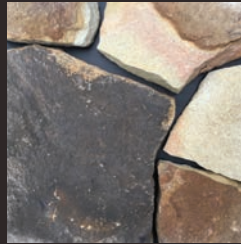
MOSAIC



Autumn Crest



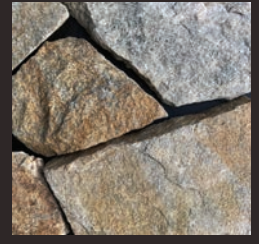
Buckeye Mosaic



Camden



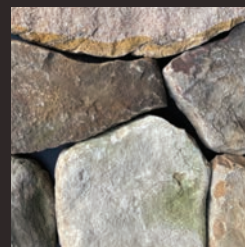
Canary River



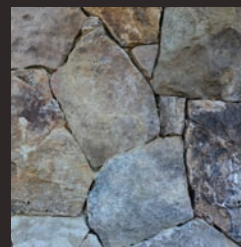
Crystal Creek



Delta Valley



Dogwood Canyon



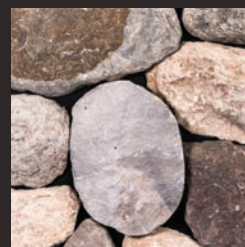
Kingston



Ramone Brown



Rodgers Forge



Saratoga Springs



Willmington

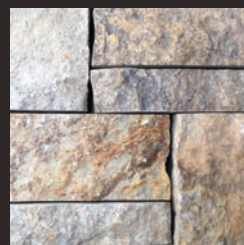


Woodbury

ARCHITECTURAL SERIES



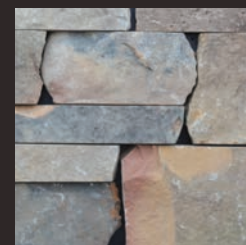
Birdsboro



Camino Cliffs



Chesapeake



Smokey Ridge

Why Natural Facing?

VALUE

Get the most out of your investment with a product that holds up for decades. Unlike many products that deteriorate over time.

ENJOY THE BENEFITS OF REAL STONE

Our product comes from a quarry, not a factory. Natural Facing is 100% real and naturally weather proof. It doesn't chip or wear like manufactured stone.

READY TO INSTALL

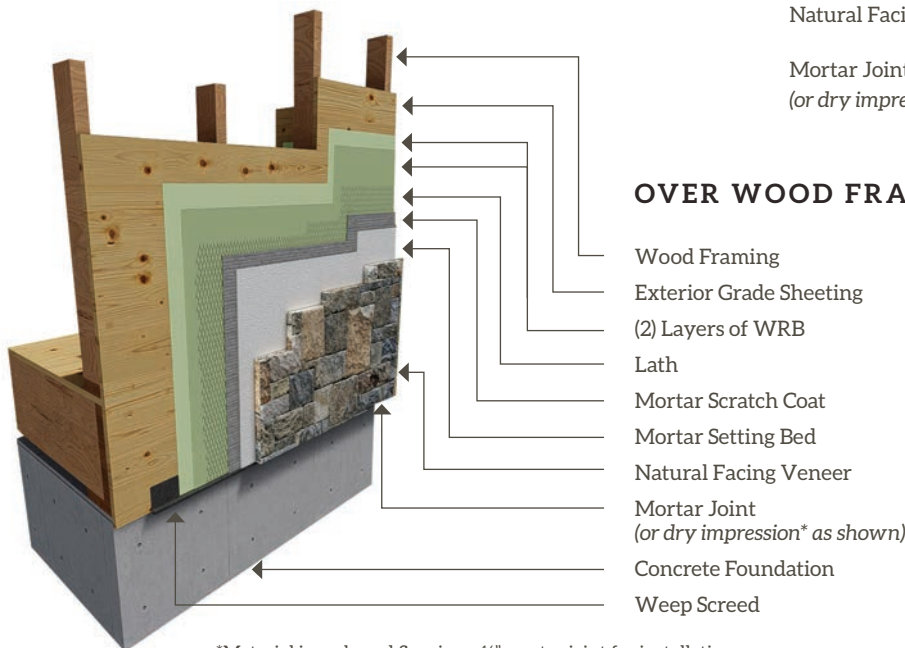
From our accessories to careful selection of stone variation, we make sure the product delivered is ready to go.

Top Reasons to work with Us:

- Proactive communication
- On-time delivery
- In-demand selection
- Consistency
- Domestic
- Reduced labor to install
- Quality Product
- Trusted Brand

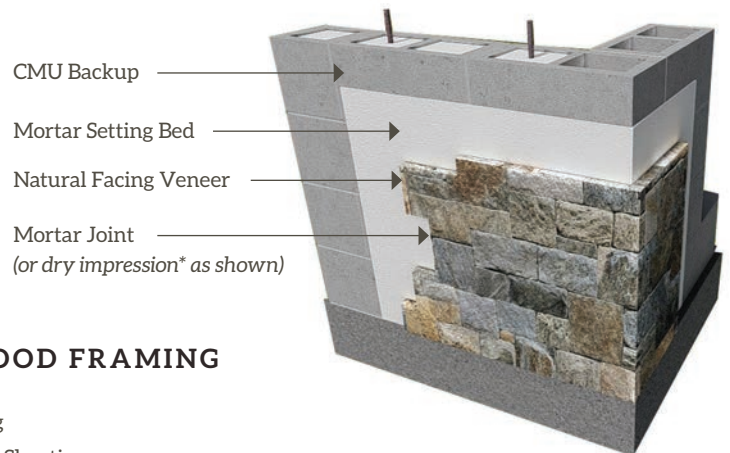
Installation

The basic schematics for installation shown are not to scale. Contact us for more details.



*Material is packaged figuring a 1/2" mortar joint for installation. Field cuts and tight joints will affect overall coverage.

OVER CONCRETE MASONRY UNITS



Where to Buy

Find a Distributor near you at
naturalfacing.com/where-to-buy/

Contact us directly at
866-369-8952 or info@naturalfacing.com